



Encl. 9-19
PANUKE J99 PI-1A

Datum elevation: 47.2 m aMSL
X-coordinate: 682307.8
Y-coordinate: 4853180.4
TD (ft MD): 4542
Drilled in: 1999 (PanCanadian)

Scale 1:4000
UWI: J99 PI-1A Well: PANUKE J99 PI-1A



PLAY FAIRWAY ANALYSIS
OFFSHORE NOVA SCOTIA - CANADA
June 2011

Seismic Interpretation
based on reflectivity

Seismic
horizon
J150

Seismic
horizon
Bac-4

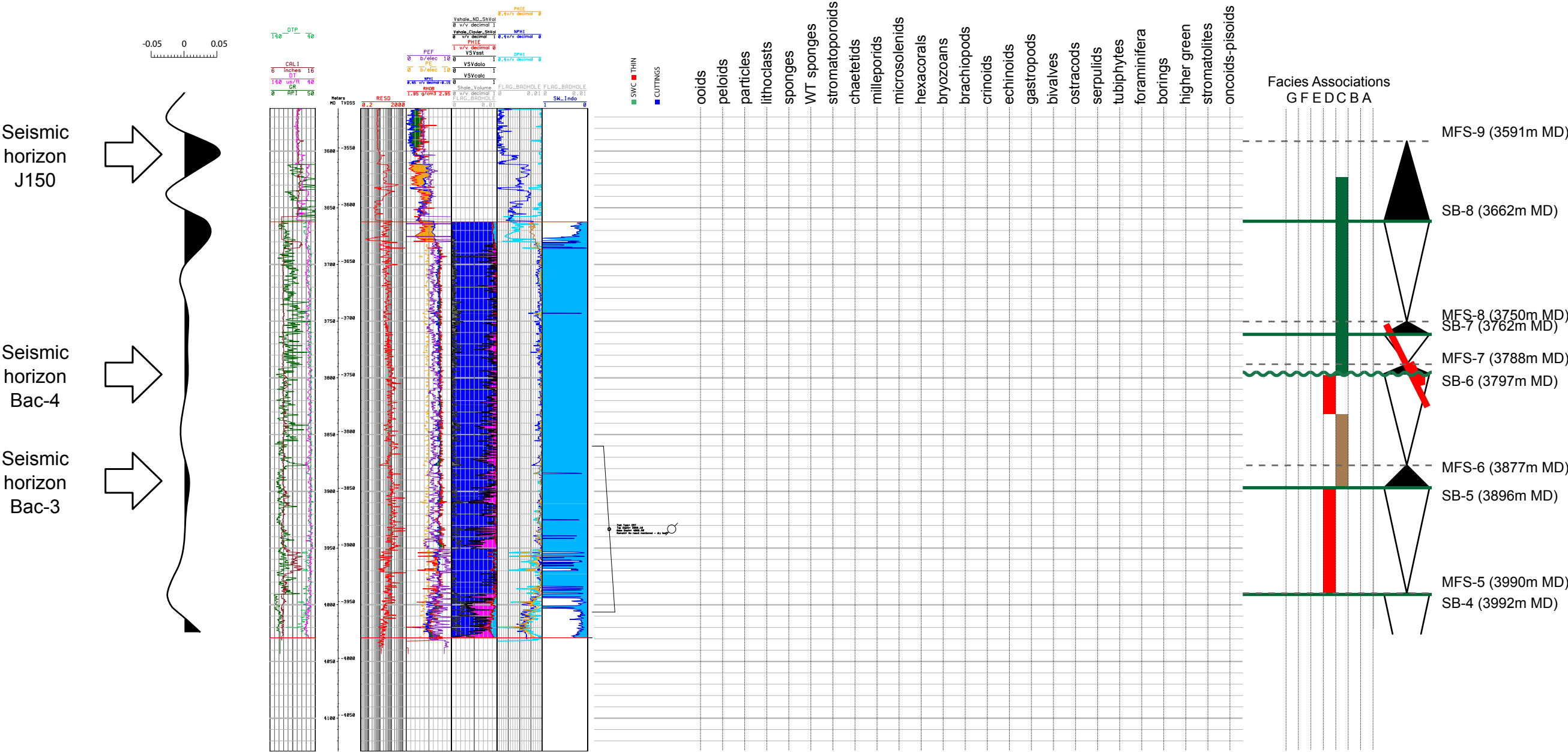
Seismic
horizon
Bac-3

Petrophysical
Evaluation

Samples

Sedimentological Data
(no data available for this well)

Stratigraphic Breakdown



PETROPHYSICAL EVALUATION	
	Sandstone
	Claystone
	Limestone
	Dolomite
	Porosity

FACIES ASSOCIATIONS	
	G1 - Shallow-water siliciclastics (delta to prodelta)
	G2 - Muddy (lagoon) platform interior
	F - Mixed carbonate-siliciclastic platform interior
	E - High-energy oolitic sand shoals
	D - "Clear" shallow-water coralgal reef margin
	C1 - "Turbid" shallow-water sponge reef mounds
	C - Proximal foreslope
	B - Distal foreslope
	A - Deep marine shelf

SEQUENCE STRATIGRAPHIC BREAKDOWN	
MFS	Maximum Flooding Surface
SB	Sequence Boundary
MFS	Maximum Flooding Surface